

Fact and Details Sheet

Proposed Bridge Road Reconstruction Project

Project Details – Proposed Work

This is a joint project between the City of Madison and the City of Monona. Madison properties are generally on the west side of Bridge Road and Monona on the east side.

Street: The pavement, curb, and the gravel base will be replaced within the project limits, and sidewalk will be replaced as necessary to repair damaged sections, where necessary for utility work, or to install improved pedestrian space/access. New sidewalk will be install on the west side of Bridge Road between Lake Point Drive and W. Broadway. Driveway aprons will be replaced to match into the new curb and sidewalk (*curb, sidewalk & drive aprons are assessable*).

Bridge: The existing structure will remain but work includes a new concrete deck, sidewalk, multiuse path and railings.

Sanitary Sewer: The existing sanitary sewer mains (installed in 1952) will be replaced and the sewer laterals (*assessable*) will be replaced from the main to the property line.

Water Main: The existing water mains within the project limits were installed in the 1972, and are in good condition. The only water work will be to relocate hydrants, valves, etc. as necessary for the new street work and other utility work.

Storm Sewer: The existing storm sewer is undersized. New storm sewer with capacity improvements will be installed throughout the project.

Did you experience flooding or near your property, or witness flooded public areas such as a street, park, bike path, or greenway? We would like to hear from you. **Please fill out the self-report form at www.cityofmadison.com/reportflooding.** This information will be used to assist with storm sewer design, and for future budgeting purposes.

Street Lighting: New overhead streetlights will be installed (*assessable*).

See location map on reverse for project limits.

Project Contacts

Madison Project Manager: Christy Bachmann
266-4095, cbachmann@cityofmadison.com

Madison Sanitary Sewer: Mark Moder
261-9250, mmoder@cityofmadison.com

Madison Lighting: Brian Smith
261-9625, bsmith@cityofmadison.com

Web: www.cityofmadison.com/engineering/projects/

Assessment Policy Breakdown

Item	City	Owner
Replace curb & sidewalk	50%	50%
Replace Drive Aprons	50%	50%
Sanitary Laterals	75%	25%
Sanitary Sewer Main	100%	0%
Storm Sewer Main	100%	0%
Private Storm Connections	0%	100%
Asphalt Pavement	100%	0%
New Sidewalk	0%	100%
Tree Removal & Planting	100%	0%
Street Lighting	0%	100%

Construction Schedule & Impacts

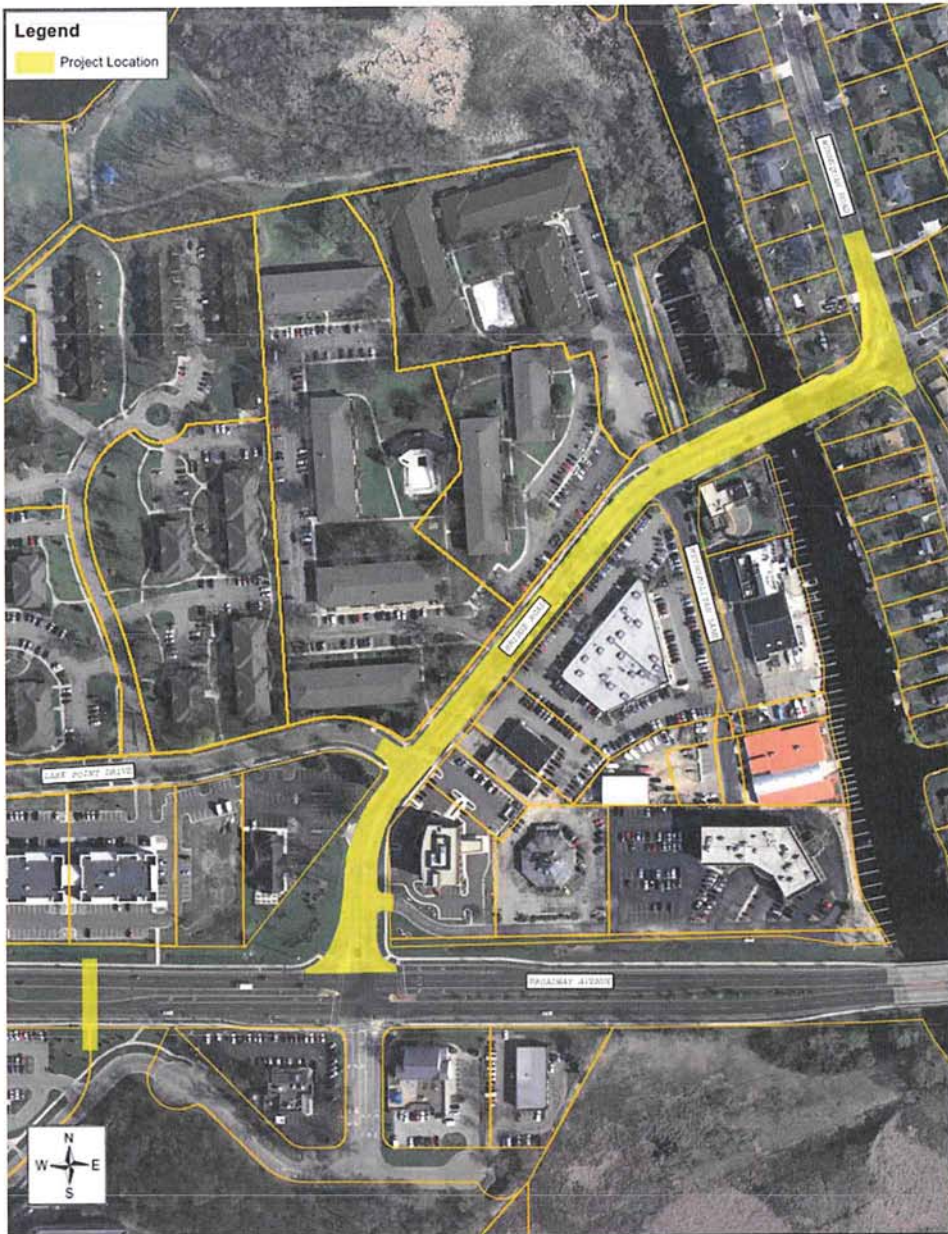
Tentative Schedule: Construction is expected to begin in early July and be completed by the end of November.

Traffic Impacts: During construction, Bridge Road will be closed to thru traffic but local access will be maintained. No on-street parking will be allowed on Bridge Road during construction. Access will remain open to driveways for the vast majority of the project, and access will only be difficult when work is taking place immediately in front of the driveways.

Work on the bridge over the Yaraha River will require full closure of the structure to motorized vehicles. A path for pedestrians and bicycles will be maintained in order to keep the “lake loop” open during construction.

Water Shut-offs: This project includes limited work on water mains, but, if some of the work would result in a shut-off to any property, advanced notice will be provide to the affected properties, prior to the shut-off.

Refuse & Mail Collection: Refuse and mail collection will continue as they typically do, and the contractor will be required to provide that access. Please notify any private refuse collection companies of the project and that normal routes may be impacted by the work.



Tree Removal Locations

Installation of the new storm sewer will require removal of the following trees:

1 ash tree located at 6421 Bridge Road

1 ash tree located at 6417 Bridge Road

Additional Tree Information:

Prior to construction, City Forestry will prune street trees that are to remain. Tree pruning in advance of the project is necessary to reduce the risk of damage to the trees during construction. For certain species, especially oak and elm trees, the pruning must be completed by April 1st to reduce the chance of disease. If additional trees need to be removed, City Engineering will notify the adjacent property owner prior to removal.

All ash street trees within the project limits have been evaluated for chemical treatment for Emerald Ash Borer (EAB), and suitable trees have been treated. Ash trees with trunks measuring less than 10" in diameter at 4.5 ft (DBH) from the ground and ash that are in poor condition will not be treated, as outlined in the City's EAB Plan. Ash trees that do not meet the treatment criteria will be removed, and would have been removed, regardless of the construction project schedule. Including ash removals as part of the project will allow for a faster replacement timeframe. For more information about EAB and the City of Madison EAB response plan please see: <http://www.cityofmadison.com/parks/services/forestry/pests/EAB/>.

Street trees provide many benefits to our city and are considered an important part of the city's infrastructure. Forestry Section staff will evaluate the terrace for new planting sites and potential replacement sites when the project is complete. There is no additional cost to the adjacent property owner for a tree planting. Street trees are typically planted in the spring of the year following the completion of the construction project. Per Madison General Ordinance 10.10, City Forestry determines tree species and planting locations. Residents cannot choose or plant their own tree in the terrace.

For any questions regarding street tree maintenance or planting, please contact the general forestry line at 266-4816.