

# **Monona Drive Reconstruction Plan:**

## **Phase I, Broadway to Nichols**

Phase I of the Monona Drive Improvements project encompasses the stretch of Monona Drive from Broadway to Nichols/Pflaum Road, a distance of approximately one mile. Roadway improvements will include a center median with left turn bays, a reduction in the number of and the combination of access points to help consolidate vehicle turning movements, continuous sidewalks and bike lanes on both sides of the road, and the signalization of the Owen Road intersection. Aesthetic improvements will include landscaped medians, wider terraces with street trees, decorative lighting, and decorative wall signage at intersections. The City of Monona is working with Madison Gas and Electric Company to remove the overhead utility lines along the east side of the road.

Construction will begin in late summer of 2009 (anytime after mid-July) with the reconstruction of parking lots and property access points and the construction of a temporary traffic lane. The existing roadway will remain intact over the 2009-2010 winter season. The reconstruction of the water and sanitary sewer infrastructure and the roadway will occur throughout the entire 2010 construction season. Phase I construction is scheduled for completion in late-2010. The construction of the improvements will be administered by WISDOT.

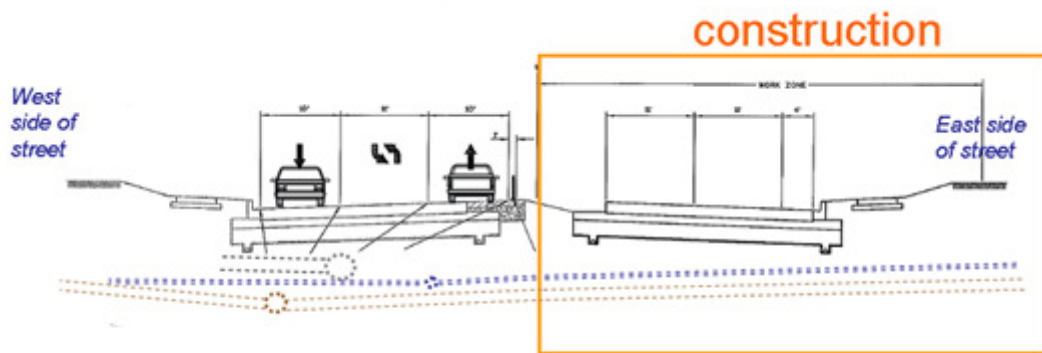
This phase is the first of three phases to reconstruct Monona Drive from Broadway to Cottage Grove Road. The section from Nichols/Pflaum Road to Cottage Grove Road will be reconstructed in subsequent years. The reconstruction of Monona Drive is a joint effort between the City of Monona, City of Madison, Dane County and WISDOT. Federal funds have been secured through the Surface Transportation Program – Urban (STP-U) and the Highway Safety Improvement Program (HSIP) to help fund these improvements. These improvements will help improve the functional ability to accommodate the existing and future traffic volumes, improve roadway safety and improve bicycle and pedestrian accommodation along the corridor.

On June 9, 2009, the Wisconsin Department of Transportation (WISDOT) received eight bids for the first phase of the Monona Drive Improvements project. The project includes the replacement of water main and sanitary sewer main as well as the reconstruction of the roadway. The lowest bid received was in the amount of \$8,648,369.68 submitted by R.G. Huston Company Inc. of Cottage Grove, WI. The bid submitted by R.G. Huston Company was nearly 15% less than the engineer's estimate for the project. This will result in fewer funds having to be expended locally by the City of Monona.

## **Construction Stages: Phase I, Broadway to Nichols**

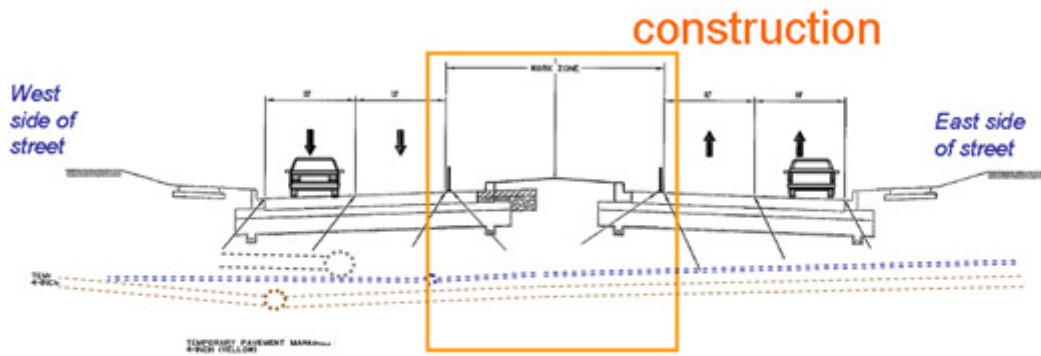
3 Lanes will remain open on Monona Drive during construction. A travel lane in each direction, and a middle lane to be used for left turns. To complete the work, traffic will shift to different sides over 4 different stages. Stage 1 (as seen below) will begin in late summer, 2009. Stages 2, 3, and 4 will occur beginning in early spring, 2010. Phase I reconstruction is scheduled for completion in late 2010. Click on the images below for a larger view.





Looking North

### Stage 3



Looking North

### Stage 4